

BI-FOLD SUPPORT BEAM FITTING GUIDE

PRE-FITTING NOTES:

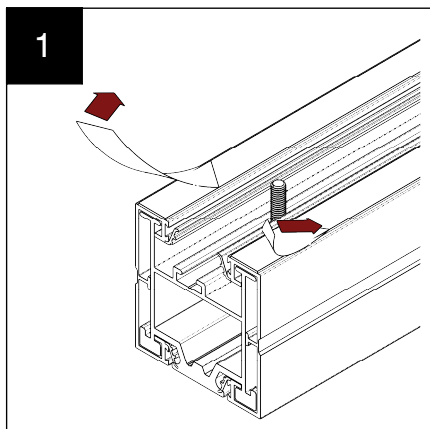
9mm fixing holes should be pre-drilled in the eaves beam 50mm in from each end of the bolster and at a maximum of 300mm centres.

The bolts should be prefitted to the bolster and secured in place using flange nuts to prevent them moving out of alignment. Don't loosen the flange nuts unless they require alteration to align them with the eaves beam holes. It is advisable to check all bolts align correctly with their corresponding holes in the eaves beam prior to removing the film from the sealing tape.

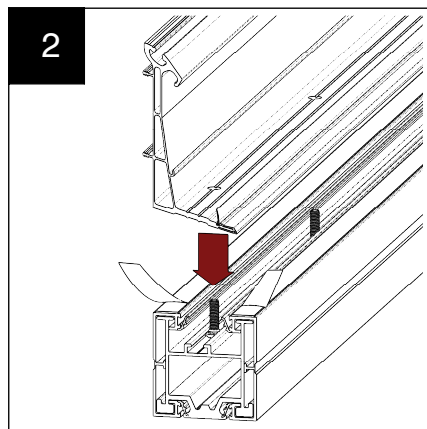
The bolster is to be fitted between corner posts with frames below. If only one side is bolstered, none bolstered sides will require a 70mm frame add-on to allow all frames to be manufactured to the same height.

The bolster is not a symmetrical component so must be positioned in the correct orientation to allow for the bolts to align correctly and the bolster to sit flush with the eaves beam.

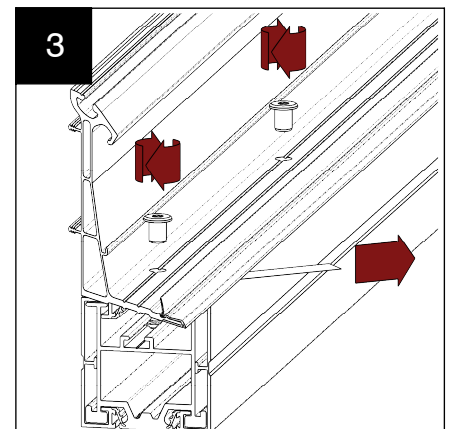
Fitting bi-fold bolster to the eaves.



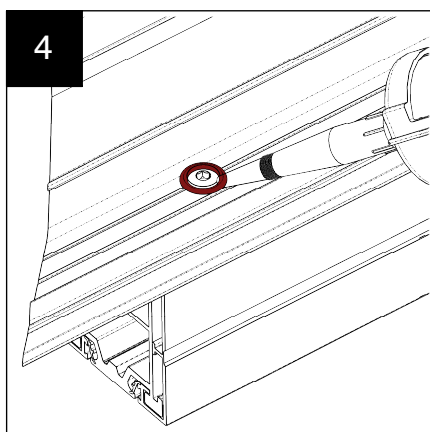
1 Peel back a small tab of the sealing tape protective film. Ensure the 'tail' is accessible from the side of the bolster.



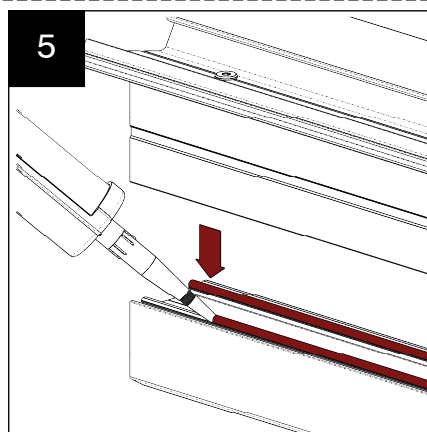
2 Lift the eaves beam onto the bi fold support beam ensuring the bolt channel is positioned to the inside and taking care to align the drilled holes with the bolts.



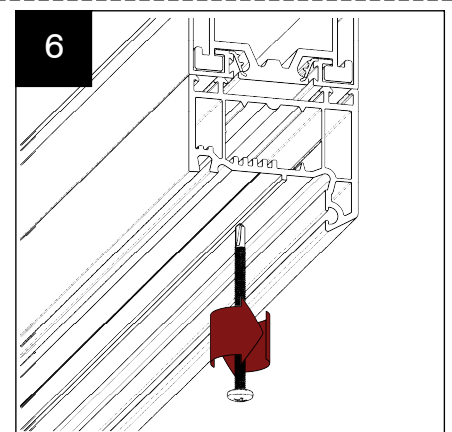
3 Using the socket flange nuts provided locate them on the bolts. Once all nuts have been located on their corresponding bolts fully peel back the sealing tape film on both sides and tighten down the nuts.



4 Using sealant apply around the heads of the fixings ensuring a water tight seal.



5 Apply sealant to the frames to ensure a weather tight seal between the bolster and the frames. Once the sealant has been applied lower the bolstered eaves onto the frames.



6 Fix the bolster to the frames using self drilling screws through the frames and up into the bolster. If steel reinforcement is included in the frames it may require pre-drilling.