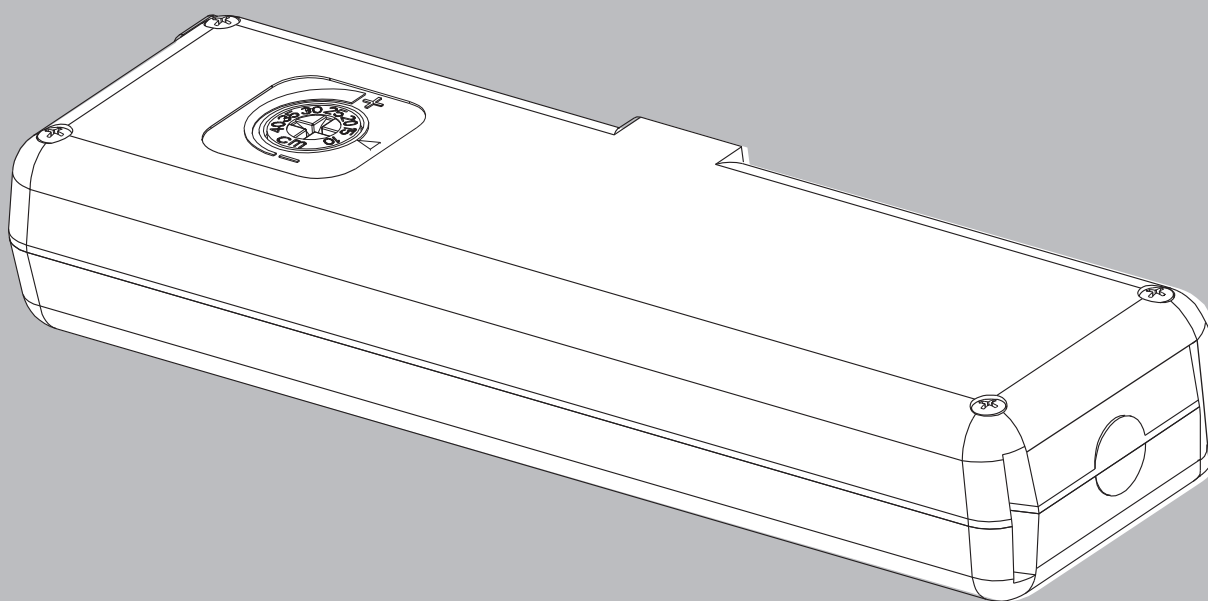


CHAIN ACTUATOR FOR WINDOW AUTOMATION

Model



PATENTED



COD. 0Pxxxx

VER.0.0

REV.11.17

**BEFORE INSTALLING AND USING THE ACTUATOR, IT IS
COMPULSORY FOR THE INSTALLER AND THE USER TO READ
AND UNDERSTAND THIS MANUAL IN ALL ITS PARTS.**

**THIS MANUAL IS AN INTEGRAL PART OF THE ACTUATOR
AND MUST BE PRESERVED FOR FUTURE REFERENCE
UNTIL DEMOLITION OF THE SAME.**

**THIS MANUAL IS AN INTEGRAL PART OF THE
ACK4 CHAIN ACTUATOR MANUAL - INSTALLATION AND USE INSTRUCTIONS**

MOUNTING INSTRUCTIONS

In order to guarantee the perfect operation of the actuator, it is necessary to follow these instructions during installation (part numbers refer to figure no. 1 and 3):

1. Make sure that the actuator has not been damaged during transit, by carrying out a complete working cycle without load.
2. If the support mounting brackets are not already fitted on the vent or this is a replacement motor these are the first parts to be fitted.
3. To fit these mark out the centre line on the mainframe and follow the layout drawing below by lining brackets to frame edge.
4. Mount the actuator unit (no. 1) on the two support mounting brackets by means of the swivel nuts (no. 3) nip up tight with spanner.
5. Assemble adjustable pillar (no. 10) and fixing nut (no. 11) by fitting into end of chain (no. 12) screw pillar in approximately $\frac{3}{4}$ of threads.
6. Offer adjustable pillar (no. 10) to sash pivot pin block (no. 6) and align holes for pivot fixing pin (no. 5).
7. Carry out electrical connections (see overleaf for instructions).
8. Extend the chain approximately 150 mm and attach the adjustable pillar (no. 10) to the sash bracket pivot pin block (no. 6) using the pivot-fixing pin (no. 5).

Note: there is no need to screw the pin in yet.

9. Perform a closing test until the end of the stroke. Check the vent is properly closed.

10. If the vent is properly closed you can now screw in the pivot-fixing pin (no. 5). If the closing is not precise, re-do actions 3+4+6+7, with the adjustable pillar screwed further in.

Note: try to avoid over stressing the sash bracket when setting up the vent closer as this may cause over excessive stress on the motor and premature failure.

11. The vent opening can be adjusted to your requirements by use of the adjusting screw situated on the side of the unit (no. 13).

Note: we recommend that the opening not to be more than 250 mm (25 on the screw setting) for any vents glazed in glass. For polycarb glazed vents the opening can be taken up to 350 mm maximum (35 on the screw setting) although 250 mm should be an adequate sized opening.

DIMENSIONS

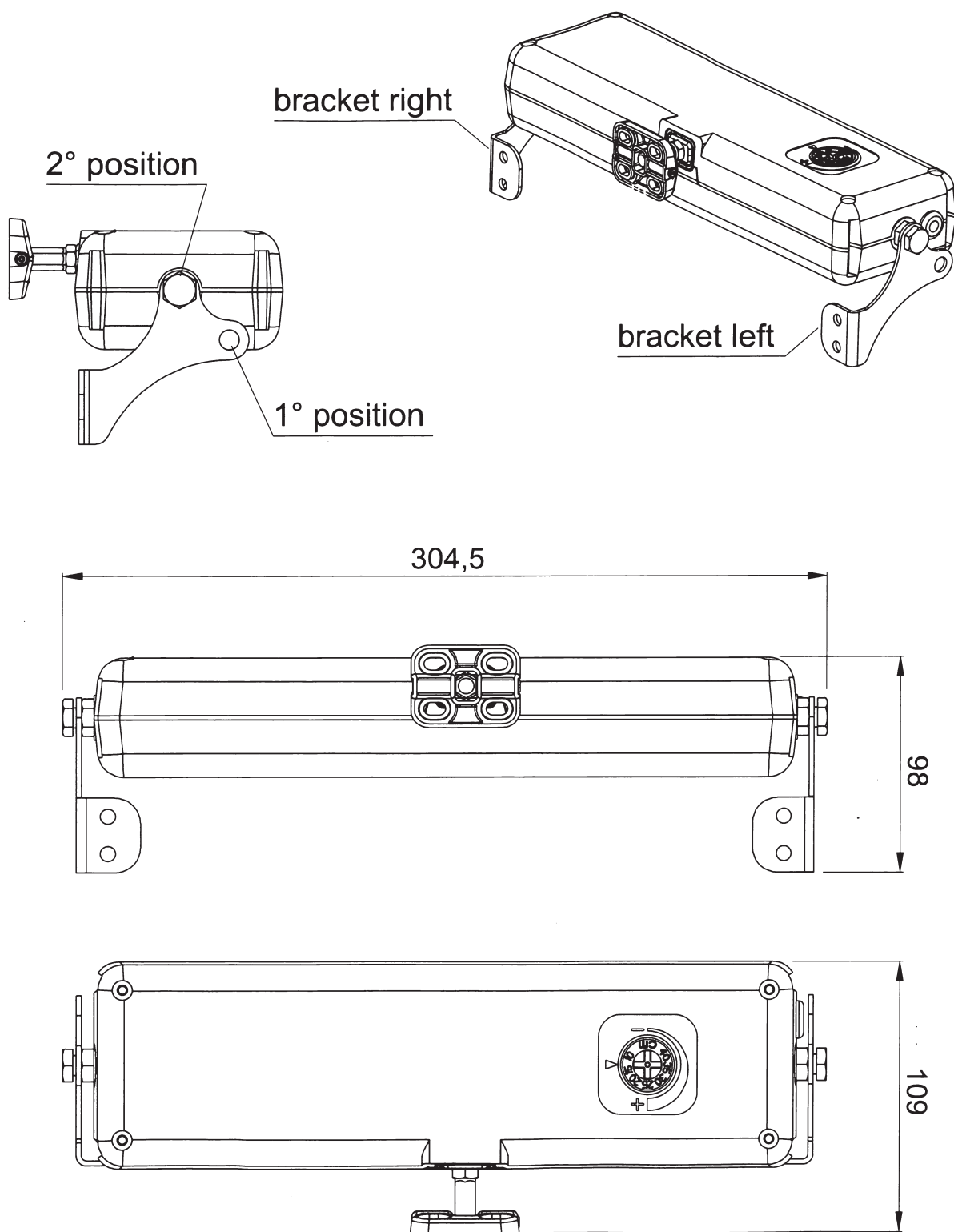
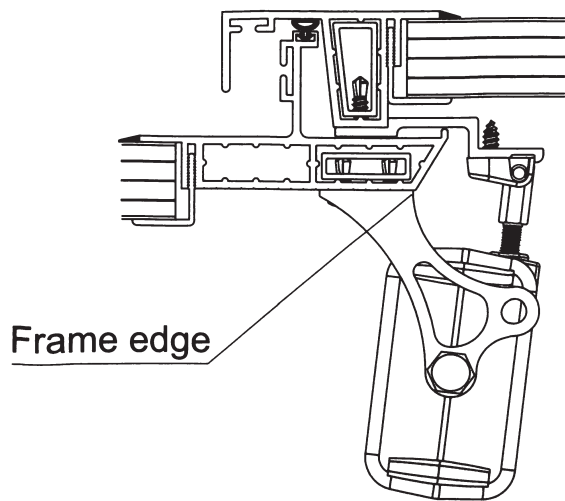
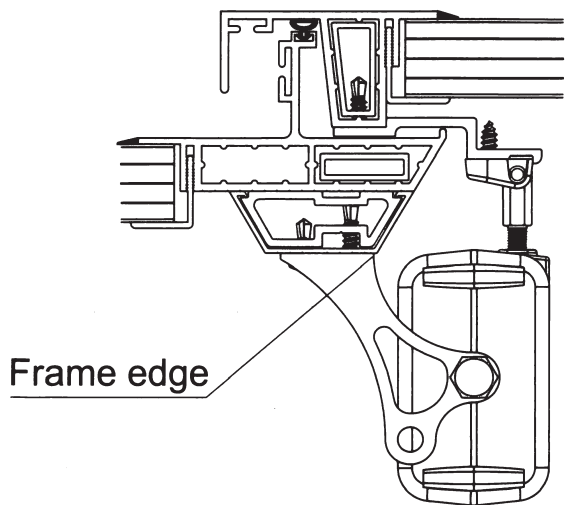


Figure 3

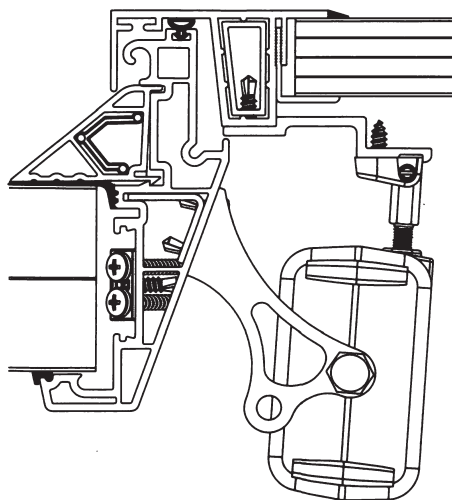
AVM003



**Standard Victorian
roof vent**



**Bolstered Victorian
roof vent**



**Maxi500 & Opti1000
roof vent's**

Figure 4

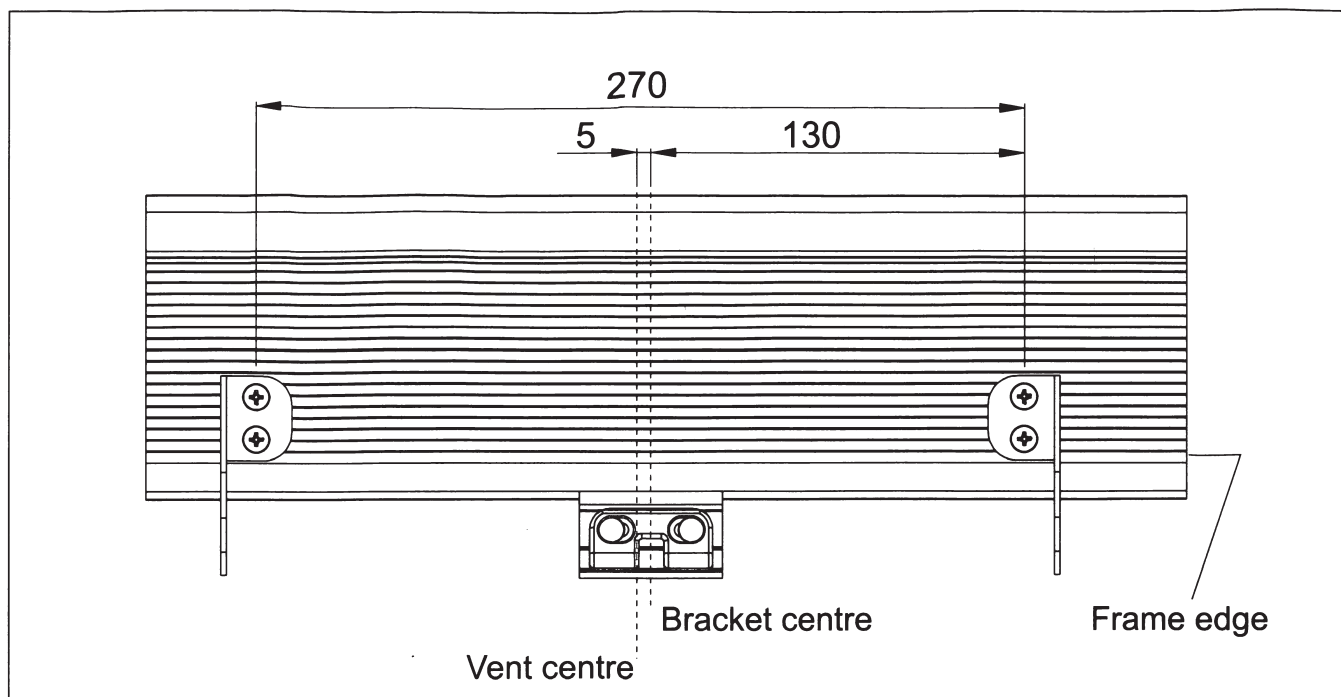


Figure 1

MOUNTING

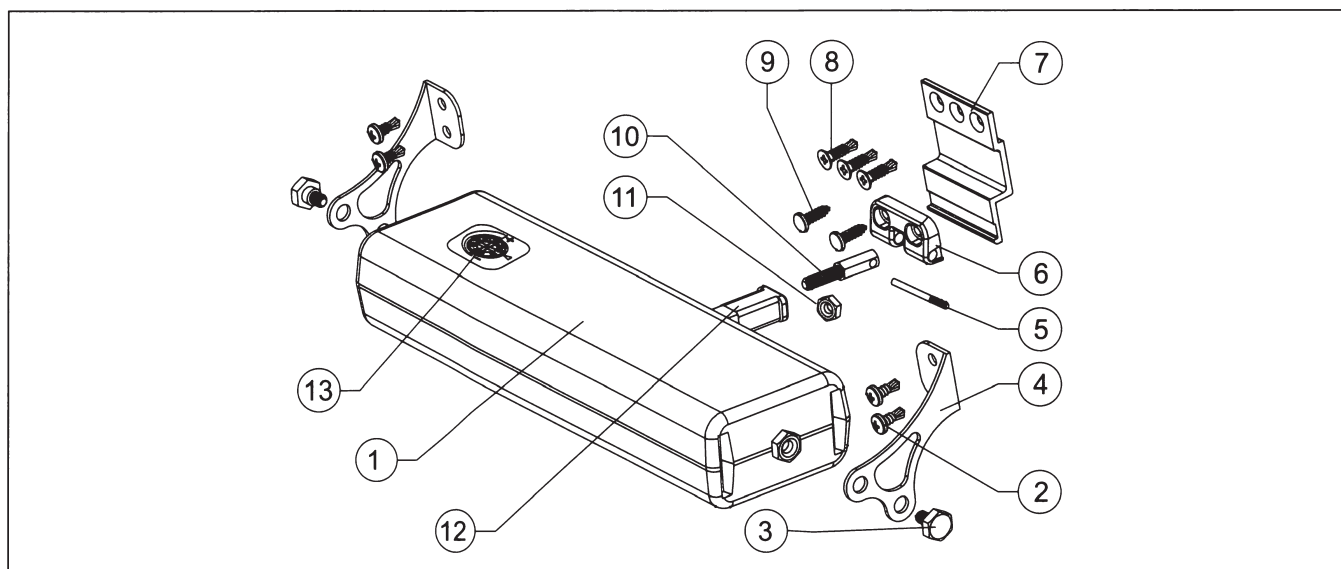


Figure 2

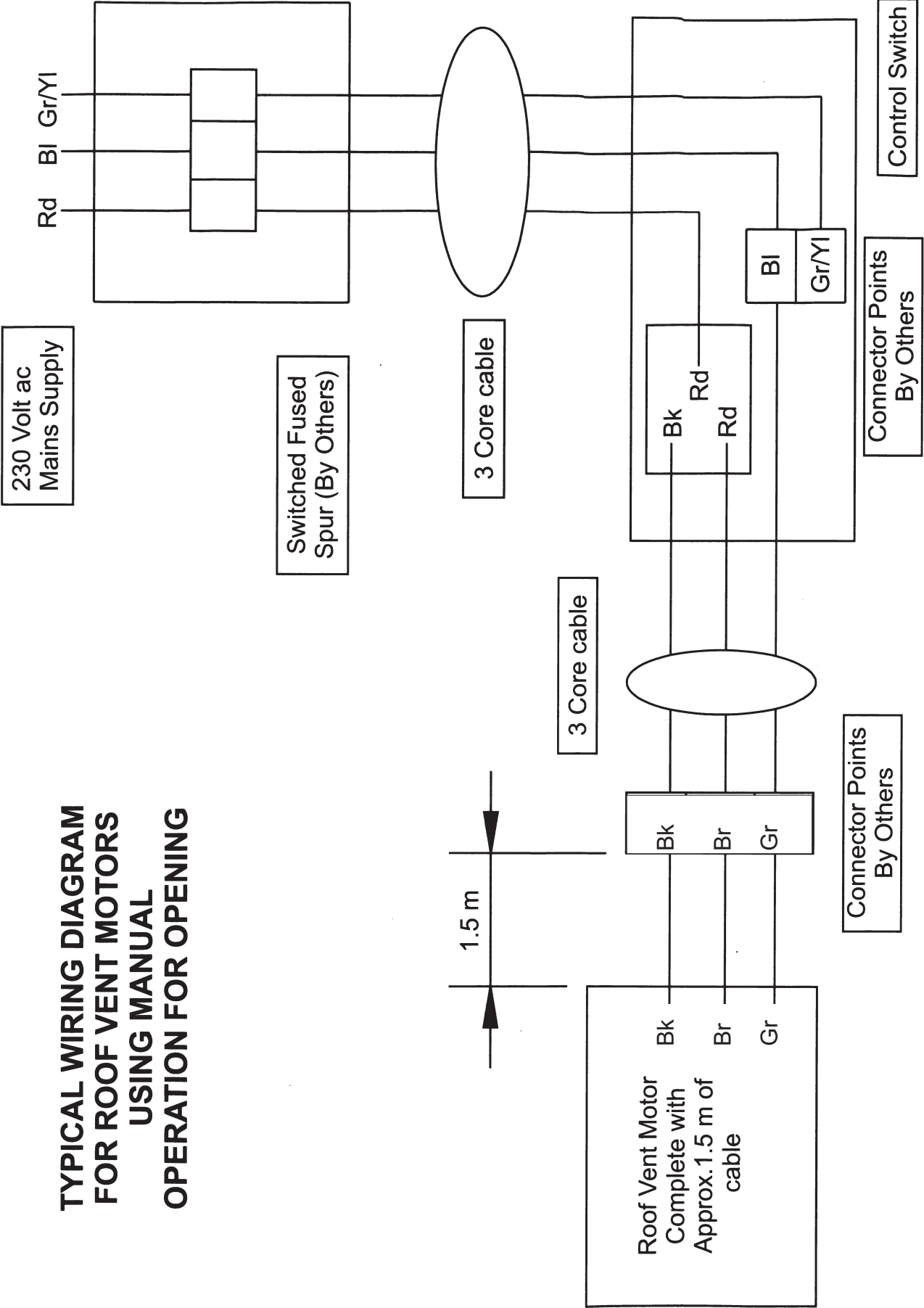
COMPONENT LIST

(Refer to figure no. 3)

- | | |
|------------------------------|-------------------------------|
| 1 - Motor unit | 7 - Sash bracket |
| 2 - Main frame fixing screws | 8 - Sash fixing screws |
| 3 - Swivel nuts | 9 - Pivot block fixing screws |
| 4 - Mounting brackets | 10 - Adjusting pillar |
| 5 - Pivot pin | 11 - Fixing nut |
| 6 - Sash pivot blocks | 12 - Chain |
| | 13 - Width adjusting screw |

AVM003

**TYPICAL WIRING DIAGRAM
FOR ROOF VENT MOTORS
USING MANUAL
OPERATION FOR OPENING**



SAFETY INSTRUCTIONS



ATTENTION: CAREFULLY READ THE FOLLOWING SAFETY INSTRUCTIONS BEFORE ASSEMBLING THIS EQUIPMENT IN ORDER TO PREVENT ELECTRIC CONTACTS, INJURY AND OTHER DANGERS.

- After having removed the packaging, make sure the equipment has not been damaged.
- Plastic bags, polystyrene, nails, etc. should be kept out of reach of children, as they are potential sources of danger.
- Before connecting the equipment, make sure that the supply voltage corresponds to the appliance voltage indicated on the “technical data” label on the equipment.
- This equipment must only be used for the purpose for which it has been built. The manufacturer cannot be considered liable against any damages or problems arising from improper use.
- The installation has to be carried out in accordance with the instructions of the manufacturer. The non-observance of these instructions could compromise safety.
- The installation should be carried out by qualified and expert technical personnel.
- The electrical power supply should be compliant with the regulations in force.
- Before carrying out the adjustment of the actuator, disconnect the voltage supply. A temporary omnipolar differential switch with an opening distance of at least 3mm from the contacts should be installed to ensure an effective separation between the net and the equipment.
- Before carrying out cleaning or maintenance make sure you have disconnected the equipment removing the electrical contacts. Do not wash the equipment with solvents or jets of water and do not submerge in water.
- In case of a fault or incorrect working, turn the equipment off, disconnect from power supply and call the customer service
- Repairs should be carried out only by qualified personnel from a service organisation authorized by the manufacturer.
- Request only original spare parts. The non-observance of the above mentioned warnings could compromise safety and will negate the equipment guarantee.

EMERGENCY PROCEDURES

In case it is necessary to open the window manually, follow the instructions below:

- Extract fixing screw no. 5 from the bracket completely (refer to figure no. 2).
- Open the window frame manually.

VENT LOGO

Address

ULTRAFRAME LOGO

Address